



Dependable Products From People You Trust



Extended Core Tray

Part #127-40-006

Instruction Manual

Updated 1/26/2018

Ver. 2.0

OFI Testing Equipment, Inc.

11302 Steeplecrest Dr. · Houston, Texas · 77065 · U.S.A.
Tele: 832.320.7300 · Fax: 713.880.9886 · www.ofite.com

©Copyright OFITE 2014

Table of Contents

Components	2
Installation.....	3
<i>Mounted Option</i>	<i>3</i>
<i>Removable Option</i>	<i>4</i>
Warranty and Return Policy	5

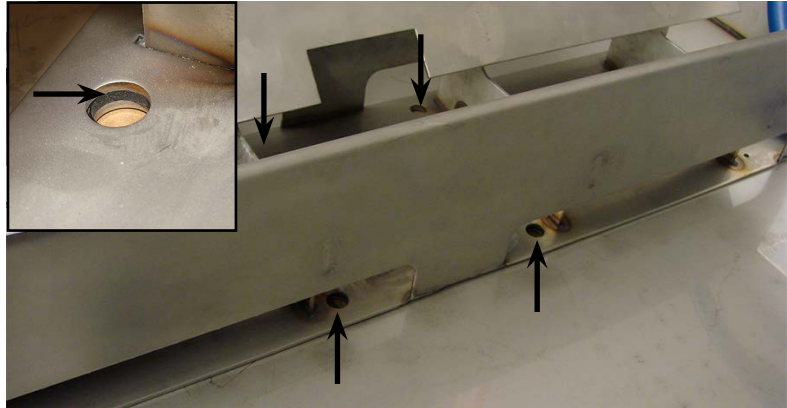
Components

#127-40-012	T-nut, Core Drill, Qty. 4
#127-40-013	Gasket, Core Drill, Qty: 8
#127-40-014	½" MNPT, ¾" Hose barb
#127-40-018	Bolt, ⅜"-16 × 1" SS, Qty. 4
#127-40-019	⅜"-13 SS Washer, Qty. 4
#127-40-021	Weldment, Drain Pan, 40" × 24"
#130-81-027-1	Hose Clamp
#130-81-033-1	Hose, PB-12
#171-44	Rubber feet, Qty. 4

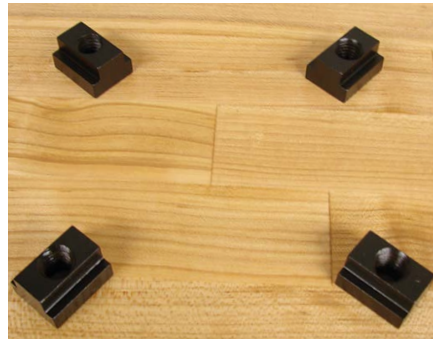
Installation

Mounted Option

1. Secure the Extended Core Tray to the Core Sample Holder with the provided hardware.
2. Place the core sample holder onto the tray, oriented so that the four ½" holes line up accordingly.
3. Place four of the Gaskets (#127-40-013) aligned with the holes between the tray and the core sample holder.



4. Place the T-nuts (#127-40-012) underneath the drill press platform (narrow side up), oriented diagonally from each other.



5. Install the ⅜"-16 × 1" Bolts (#127-40-018) through the top of the holes with the remaining four Buna Gaskets (#127-40-013) and ⅜" Washers (#127-40-019).

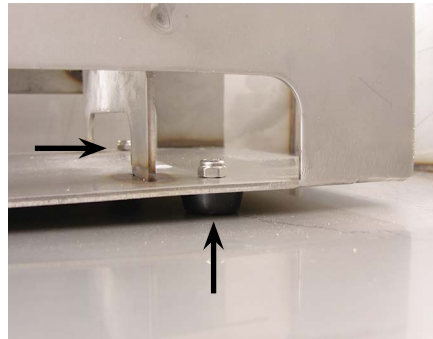


Installation

Removable Option

There is another option which allows the user to mount Rubber Feet (#171-44) to the bottom of the core sample tray making it removable if needed.

1. Install the four rubber feet with the provided screws and lock nuts through the holes at the four corners of the core sample tray.



Once the tray has been installed as needed, attach the 72" Hose (#130-81-033-1) to the Hose Barb (#127-40-014) with the Hose Clamp (#130-78-027-1) and allow the hose to drain to a desired drainage destination.

Warranty and Return Policy

Warranty:

OFI Testing Equipment, Inc. (OFITE) warrants that the products shall be free from liens and defects in title, and shall conform in all respects to the terms of the sales order and the specifications applicable to the products. All products shall be furnished subject to OFITE's standard manufacturing variations and practices. Unless the warranty period is otherwise extended in writing, the following warranty shall apply: if, at any time prior to twelve (12) months from the date of invoice, the products, or any part thereof, do not conform to these warranties or to the specifications applicable thereto, and OFITE is so notified in writing upon discovery, OFITE shall promptly repair or replace the defective products. Notwithstanding the foregoing, OFITE's warranty obligations shall not extend to any use by the buyer of the products in conditions more severe than OFITE's recommendations, nor to any defects which were visually observable by the buyer but which are not promptly brought to OFITE's attention.

In the event that the buyer has purchased installation and commissioning services on applicable products, the above warranty shall extend for an additional period of twelve (12) months from the date of the original warranty expiration for such products.

In the event that OFITE is requested to provide customized research and development for the buyer, OFITE shall use its best efforts but makes no guarantees to the buyer that any products will be provided.

OFITE makes no other warranties or guarantees to the buyer, either express or implied, and the warranties provided in this clause shall be exclusive of any other warranties including ANY IMPLIED OR STATUTORY WARRANTIES OF FITNESS FOR PURPOSE, MERCHANTABILITY, AND OTHER STATUTORY REMEDIES WHICH ARE WAIVED.

This limited warranty does not cover any losses or damages that occur as a result of:

- Improper installation or maintenance of the products
- Misuse
- Neglect
- Adjustment by non-authorized sources
- Improper environment
- Excessive or inadequate heating or air conditioning or electrical power failures, surges, or other irregularities
- Equipment, products, or material not manufactured by OFITE
- Firmware or hardware that have been modified or altered by a third party
- Consumable parts (bearings, accessories, etc.)

Returns and Repairs:

Items being returned must be carefully packaged to prevent damage in shipment and insured against possible damage or loss. OFITE will not be responsible for equipment damaged due to insufficient packaging.

Any non-defective items returned to OFITE within ninety (90) days of invoice are subject to a 15% restocking fee. Items returned must be received by OFITE in original condition for it to be accepted. Reagents and special order items will not be accepted for return or refund.

OFITE employs experienced personnel to service and repair equipment manufactured by us, as well as other companies. To help expedite the repair process, please include a repair form with all equipment sent to OFITE for repair. Be sure to include your name, company name, phone number, email address, detailed description of work to be done, purchase order number, and a shipping address for returning the equipment. All repairs performed as "repair as needed" are subject to the ninety (90) day limited warranty. All "Certified Repairs" are subject to the twelve (12) month limited warranty.

Returns and potential warranty repairs require a Return Material Authorization (RMA) number. An RMA form is available from your sales or service representative.

Please ship all equipment (with the RMA number for returns or warranty repairs) to the following address:

OFI Testing Equipment, Inc.
Attn: Repair Department
11302 Steeplecrest Dr.
Houston, TX 77065
USA

OFITE also offers competitive service contracts for repairing and/or maintaining your lab equipment, including equipment from other manufacturers. For more information about our technical support and repair services, please contact techservice@ofite.com.